

HILLFIELD CLOSE, HARROW



Three Bedroom Semi Detached House

OIEO £700,000

Description

Robertson Phillips are delighted to present this rarely available three-bedroom semi-detached home, tucked away in a peaceful cul-de-sac. Offering fantastic potential, the property is in need of modernisation but benefits from excellent scope to extend—whether to the side, rear, or into the loft (STPP). This is an ideal opportunity for buyers looking to create their dream family home in a sought-after location. The ground floor features an entrance hallway, a bright front reception room, a separate dining room, and a kitchen. Upstairs comprises three well-proportioned bedrooms, a family bathroom, and a separate W.C. Additional highlights include a private driveway, a garage to the side, and a generously sized rear garden—perfect for outdoor entertaining or future expansion. The property is offered with No Upper Chain, making for a smooth and hassle-free purchase. Situated within close proximity to outstanding local schools, this home is perfect for families looking to settle in a quiet yet well-connected neighbourhood. Viewing is highly recommended to appreciate the full potential this property has to offer.





- *Three bedroom semi detached house in need of updating*
- *Cul-de-sac within easy reach of facilities*
- *Garage with its own driveway*
- *No Upper Chain, Viewing advised*
- *Rarely available within this location*
- *Ample scope to extend to the side, rear and into the loft*
- *Two reception rooms*

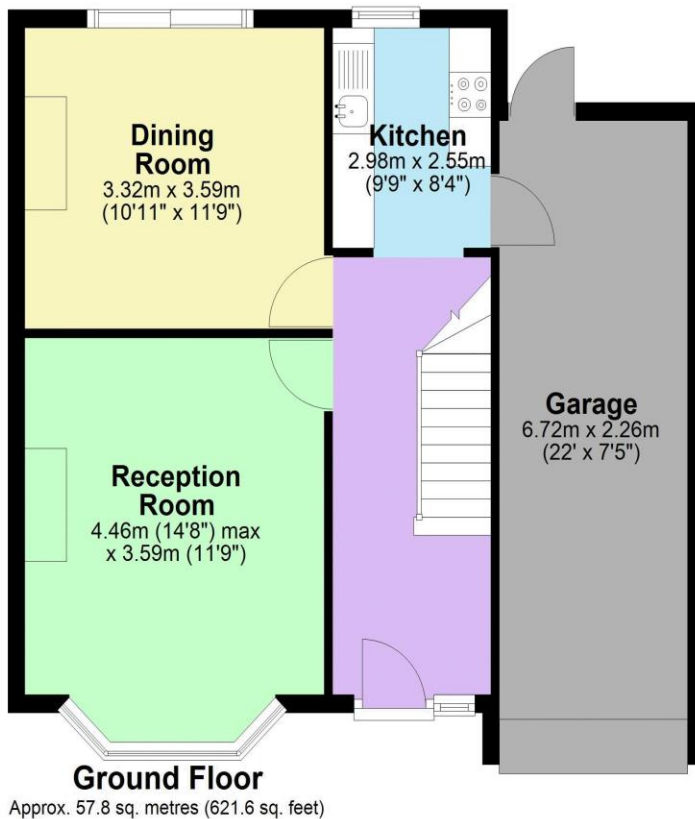


Additional Information

TENURE: FREEHOLD

LOCAL AUTHORITY: LONDON BOROUGH OF HARROW

ENERGY EFFICIENCY RATING: D



Total area: approx. 99.5 sq. metres (1070.7 sq. feet)

Score	Energy rating	Current	Potential
92+	A		
81-91	B		87 B
69-80	C		
55-68	D	61 D	
39-54	E		
21-38	F		
1-20	G		



We have not sought to verify the legal title of the property, the existence of planning permissions and/or building regulation approvals and have been unable to check the working condition of any services or appliances.

Property layouts are for general guidance and are not drawn exactly to scale. Measurements are taken at the widest points and bays, alcoves, wardrobes etc. may not be shown.